



» Brings You the Best in Retail Technology »

XTREME III

15" High Performance Touch Terminal

High-End industrial-grade POS

- For environments that required high computing power and excellent speed.
- Greater performance in multiple tasks and IoT applications
- Extreme Powered Intel® 6th Generation Skylake Platform
- Fanless design from Celeron all the way to i7 CPU (Celeron/i3/i5/i7)
- Rear cover Aluminum Die-Casting construction for exceptional thermal dissipation
- Futureproof with support up to Triple Display and compatible with iAMT (i5/i7 only)
- Latest DDR4 memory and SATA 3.0 support, maximized the access speed and efficiency.

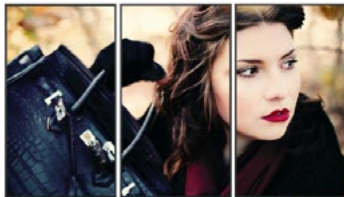
1 2nd Display - 15" Screen



Available in IoT Ready

5 YEAR WARRANTY

Supports Dual LAN, VGA and HDMI for Customer Display and High Quality Digital Signage (IoT Advance).



HDMI HIGH-DEFINITION MULTIMEDIA INTERFACE



2 2nd Display - 11.6" Screen



3 2nd Display - 7" Screen

Xtreme III + RP-700 + PS103 Integrated



Optimizing Your Counter Space



PS 103 POS Stand



Xtreme III Panel (HDD on Top)



RP-700

Interface:

- 2 x Serial ports (COM1, COM2)
- 2 x Serial ports (COM3, COM4)
- 1 x DB-15 VGA port
- 1 x RJ11 Cash Drawer port
- 1 x DC+12V out
- 4 x USB 3.0
- 1 x Audio (1 Line-out)
- 1 x HDMI port
- 1 x 3W Speaker
- 1 x DC +12V input power-jack
- 2 x LAN IEEE 802.3 10/100/1000 Gigabit Ethernet.



Applications:



Supermarket



Malls & Entertainment



Merchant Establishment



Hospitals / Pharmacy



Banks



Restaurants



Hotels



School / Education Institution



» Brings You the Best in Retail Technology »

XTREME III

15" High Performance Smart POS System



XTREME III: The 6th Generation POS

ITEM:	Xtreme III - IoT Ready:	Xtreme III - IoT Advanced:
CPU:	6th Generation Sky Lake - H110 Chipset	6th Generation Sky Lake – Q170 Chipset
	Celeron G3900TE (2.3GHz, Dual Core , 2M Cache)	i5-6500TE (up to 3.3GHz, Quad Core, 4M Cache)
	i3-6100TE (2.7GHz, Dual Core, 4M Cache)	i7-6700TE (up to 3.4GHz, Quad Core, 8M Cache)
LCD:	15" Active TFT color LCD, resolution 1024 x 768, LED backlight	
Touch	PCT	
Memory:	DDR4 SODIMM (2133 MHz), 2x Memory, Standard Spec: 4GB, 8GB, 16GB (Support up to 32GB)	
Storage:	Internal 2.5" SATA BAY x 1 at Stand	
	Internal 2.5" SATA BAY x 1 at Panel PC	
	HDD Standard: 500 GB x 1 (default)	
	SSD Standard Selection: 32 GB / 64 GB / 128 GB	
External I/O Interface:	2 * Serial ports, RS232 (DB9), RI/5V/12V selection by BIOS (COM1, COM2)	
	2 * Serial ports, RS232 (RJ45), RI/5V/12V selection by JP (COM3, COM4)	
	1 * DB-15 VGA port	
	1 * RJ11 port supports 2 cash drawer with 24V	
	1 * DC+12V out	
	4 * USB 3.0	
	1 * DC +12V input power-jack	
	1 * Audio (1 * Line-out 1)	
	1 * HDMI port	
	1 * 3W Speaker	
	2 * LAN IEEE 802.3 10/100/1000 Gigabit Ethernet	
	Powered USB 12V x1 & 24V x1 (Optional)	
	Parallel Port (Optional)	
Expansion Slot:	1 * Mini-PCIe slot	
ITEM	Xtreme III - IoT Ready:	Xtreme III - IoT Advanced:
RAID Function:	N/A	On-Board
Display Support:	Dual Independent Displays	Triple Independent Displays
Intel AMT Support:	N/A	Yes
Optional 2nd Displays:	Customer display module (2 x 20 VFD) / 7" LCD Monitor / 11.6" LCD Monitor / 15" LCD Monitor	
Optional Peripherals:	The Combinations:	
	(1) MSR	
	(2) MSR + IC Card + Fingerprint	
	(3) MSR + IC Card + RFID (4) MSR + IC Card + i-Button	
	(5) KB-32 Programmable Key Board (only support Win7 32bit)	



» Brings You the Best in Retail Technology »

XTREME III

15" High Performance Smart POS System



XTREME III: The 6th Generation POS

ITEM:	Xtreme III - IoT Ready:	Xtreme III - IoT Advanced:
Optional WiFi:	Mini-PCIe interface card: IEEE 802.11 b/g/n	
Dimensions:	Physical: 360mm (W) x 237mm (D) x 335mm (H)	
Adaptor	AC-In 100~240V / DC-Out 12V, 120W (Optional 180W for Powered USB)	
Cable:	RS-232 RJ-45 converts to RS-232 DB-9 (2 x Cables)	
OS:	Window 7, POS Ready7, Window 8.1, Windows 8.1 Industry Pro Retail, Windows 10, Linux (Ubuntu)	
Reliability:	System Operating Temperature: 0~40 degree	
	System Humidity: 15% ~ 80%	
	Storage Temperature: -20~60 degree	



CARE . TRUST . RESPONSIBILITY



Download Our APP

Partner Tech Middle East Group

SALES OFFICE: Office No. 1004, 10th Floor, Aspect Tower, 33a Al Sa'ada Street, Business Bay, Dubai, UAE
 TECHNICAL OFFICE: Plot S10119, Gate 7, South Zone, Jebel Ali, Dubai, UAE
 SERVICE CENTRE: New Smart Automation - Al Qusais Industrial Area 5 – Dubai
 TEL NO: +971 4 447 4273 | +971 4 352 4486 | +971 4 886 2980 | +971 52 429 3908
 SALES: info@partnertechme.com | TECHNICAL SUPPORT: support@partnertechme.com

Distribution Brands

